






Key:

StrataPlan Detail Membrane	
Hot Air Weld	
StrataPlan SF Membrane	
StrataTherm Insulation	
StrataShield Air & Vapour Control Layer	

Construction Notes:

A sump min 300mm x 300mm should be created around the outlet to improve the drainage.

Apply treated timber battens to form the sump, or alternatively you can use the pre-formed StrataPlan Metal as indicated.

Outlets should be supplied and installed with a suitable outlet guard to protect all outlets from any ingress of debris.

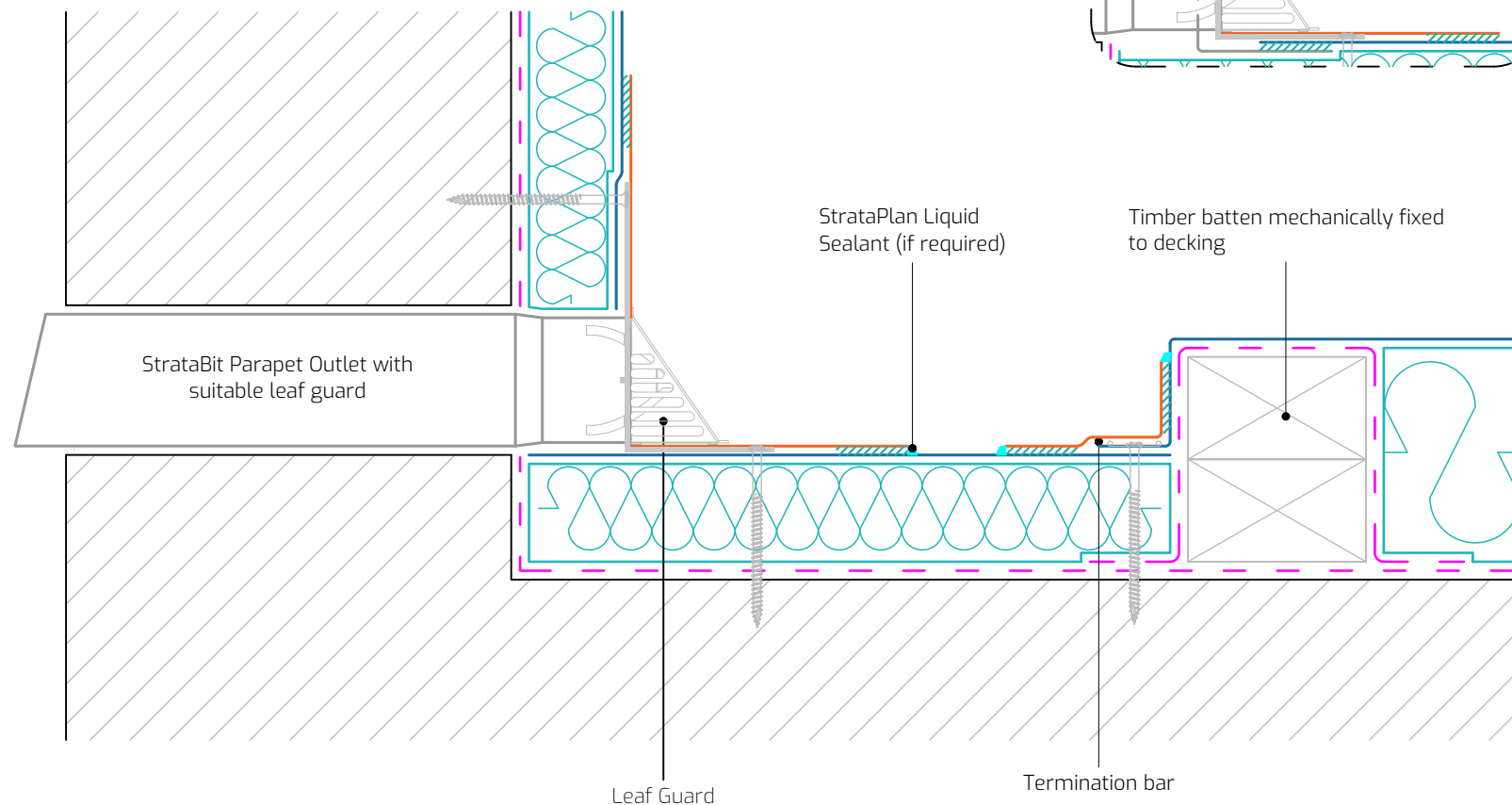
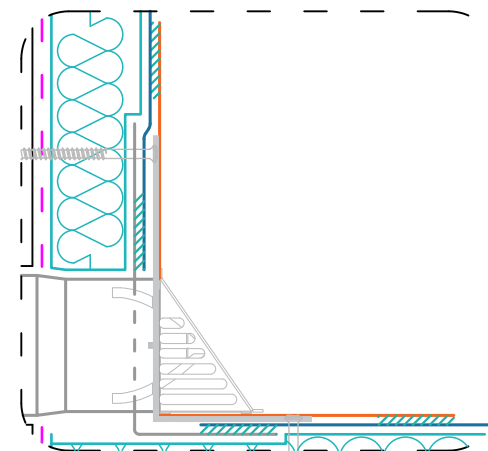
The system build-up and application should adhere to the STRATA issued specification.

All surfaces must be clean, dry, and suitably prepared to accept the waterproofing system.

All details should be installed in full compliance with the most up-to-date NHBC Standards, BS 6229, and STRATA recommendations.

Roof drainage layout must comply with BS EN 12056-3:2000

Alternative Detail



Drawing Title: Parapet Outlet

Drawing Number: SP-SF-W20

Drawn By: E.V.

Scale: 1:4

Date: 26/09/2025

T: 028 9030 2924 | E: technical@stratawaterproofing.com | W: www.stratawaterproofing.com

Copyright Reserved - Please note that this drawing and the copyright therein is the property of Strata Waterproofing Systems and is issued on the understanding that the drawing or any detail thereof will not be divulged to a third party unless written permission is first obtained from Strata Waterproofing Systems. The drawing is valid only when approved by the Architect / Contractor concerned.

This detail is representative of a typical situation and provided for illustration purposes. Insulation thickness shown may differ in accordance with the specified U-value requirement.

