

Key:

StrataPlan Detail Membrane



Hot Air Weld



StrataPlan SF Membrane



StrataTherm Insulation



StrataShield Air & Vapour Control Layer

**Construction Notes:**

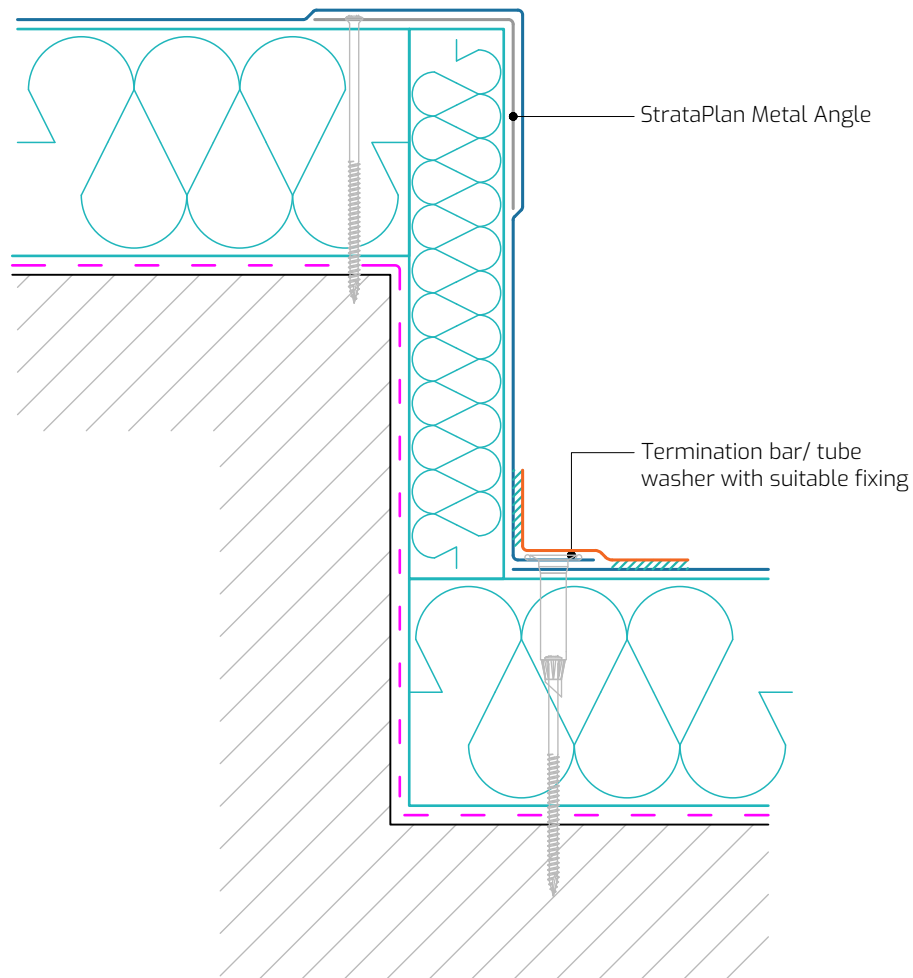
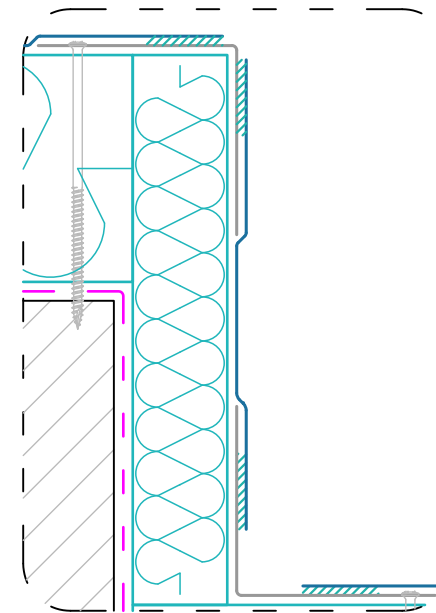
Mechanically fix the StrataPlan Metal Angle and termination bar at 150mm centres, or as per the site specific wind-load location.

Any upstand in excess of 250mm should be mechanically fixed at the leading edge with appropriate fasteners in order to avoid slippage of the waterproofing membrane.

The system build-up and application should adhere to the STRATA issued specification.

All surfaces must be clean, dry, and suitably prepared to accept the waterproofing system.

All details should be installed in full compliance with the most up-to-date NHBC Standards, BS 6229, and STRATA recommendations.

**Alternative Detail****Drawing Title:** Change In Level**Drawing Number:** SP-SF-W14**Scale:** 1:4**Drawn By:** E.V.**Date:** 26/09/2025T: 028 9030 2924 | E: technical@stratawaterproofing.com | W: www.stratawaterproofing.com

Copyright Reserved - Please note that this drawing and the copyright therein is the property of Strata Waterproofing Systems and is issued on the understanding that the drawing or any detail thereof will not be divulged to a third party unless written permission is first obtained from Strata Waterproofing Systems. The drawing is valid only when approved by the Architect / Contractor concerned.

This detail is representative of a typical situation and provided for illustration purposes. Insulation thickness shown may differ in accordance with the specified U-value requirement.

