






Key:

StrataPlan Detail Membrane	
Hot Air Weld	
StrataPlan SF Membrane	
StrataTherm Insulation	
StrataShield Air & Vapour Control Layer	

Construction Notes:

Use a strip of StrataPlan SF Membrane to bring up and over the parapet wall as indicated. Ensure all waterproofing terminates a min. 150mm above the finished roof level.

Mechanically fix the StrataPlan Metal Trim, StrataPlan Metal Angle and termination bar at 150mm centres, or as per the site specific wind-load calculation

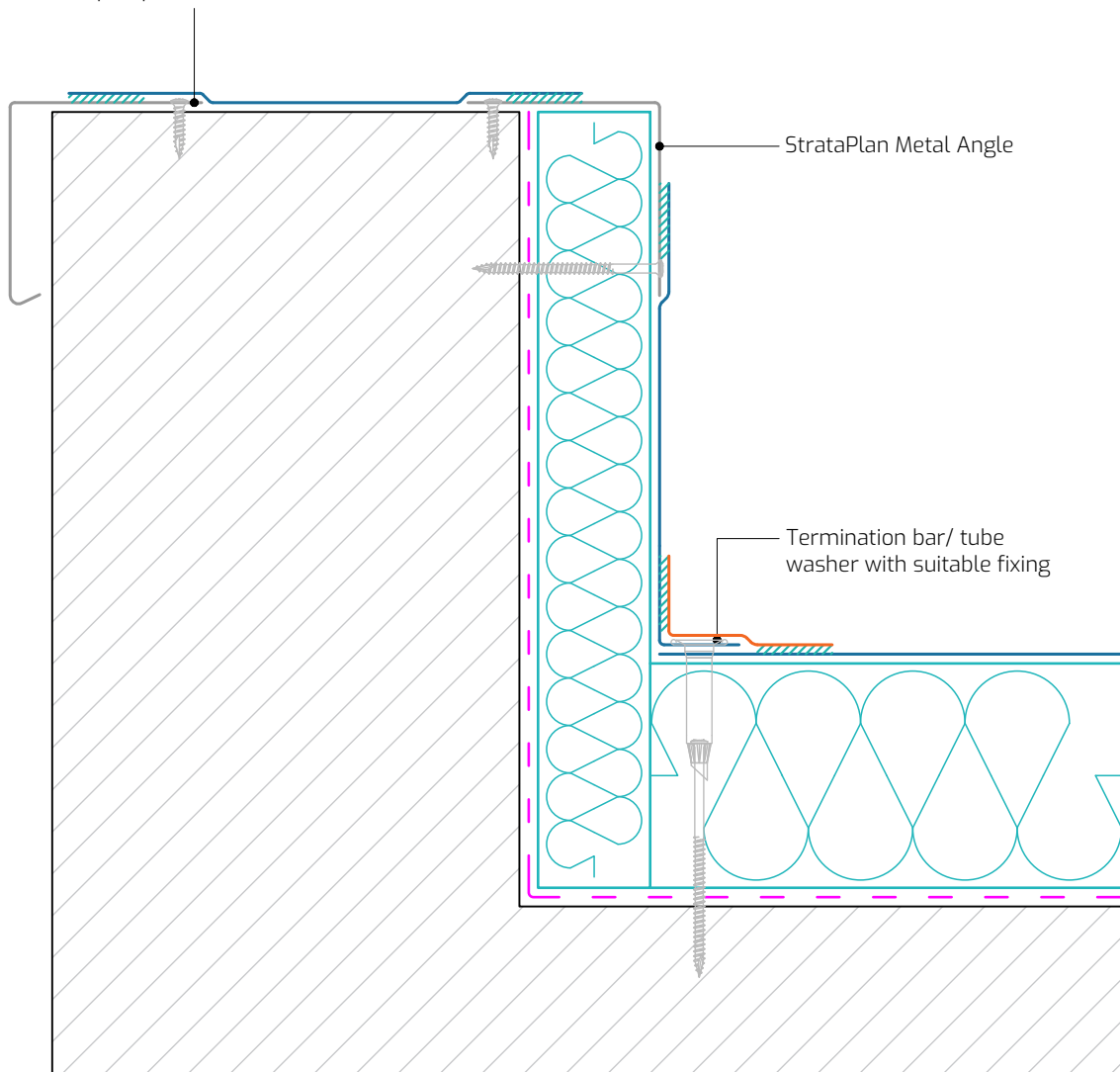
Any upstand in excess of 250mm should be mechanically fixed at the leading edge with appropriate fasteners in order to avoid slippage of the waterproofing membrane.

The system build-up and application should adhere to the STRATA issued specification.

All surfaces must be clean, dry, and suitably prepared to accept the waterproofing system.

All details should be installed in full compliance with the most up-to-date NHBC Standards, BS 6229, and STRATA recommendations.

StrataPlan Metal Trim mechanically fixed to parapet



Drawing Title: Parapet Wall

Drawing Number: SP-SF-W12

Scale: 1:4

Drawn By: E.V.

Date: 26/09/2025

T: 028 9030 2924 | E: technical@stratawaterproofing.com | W: www.stratawaterproofing.com

Copyright Reserved - Please note that this drawing and the copyright therein is the property of Strata Waterproofing Systems and is issued on the understanding that the drawing or any detail thereof will not be divulged to a third party unless written permission is first obtained from Strata Waterproofing Systems. The drawing is valid only when approved by the Architect / Contractor concerned.

This detail is representative of a typical situation and provided for illustration purposes. Insulation thickness shown may differ in accordance with the specified U-value requirement.

