

Key:

StrataPlan Detail Membrane

Hot Air Weld

StrataPlan GF Membrane

StrataPrime Fleeceback Adhesive

StrataTherm Insulation

StrataShield Air & Vapour Control Layer

StrataShield PU Mastic

Construction Notes:

Use a strip of StrataPlan GF Membrane to form the skirting to upstand. Alternatively, a StrataPlan Metal Angle can be utilised as indicated. Ensure all waterproofing terminates a min. 150mm above the finished roof level.

Mechanically fix the termination bar and pressure plates or the StrataPlan Metal Angle at 150mm centres, or as per the site specific wind-load calculation.

Carefully cut out the chase to a depth of min. 25mm. The chase should be below the level of any DPC or cavity tray as indicated.

Install a suitable lead-free counter flashing to the chase, lengths shouldn't exceed 1.5m and should have a lap of min. 100mm.

Any upstand in excess of 250mm should be mechanically fixed at the leading edge with suitable fixings in order to avoid slippage of the waterproofing membrane.

The system build-up and application should adhere to the STRATA issued specification.

All surfaces must be clean, dry, and suitably prepared to accept the waterproofing system.

All details should be installed in full compliance with the most up-to-date NHBC Standards, BS 6229, and STRATA recommendations.

**Drawing Title:**

Skirting to Upstand - Counter Flashing

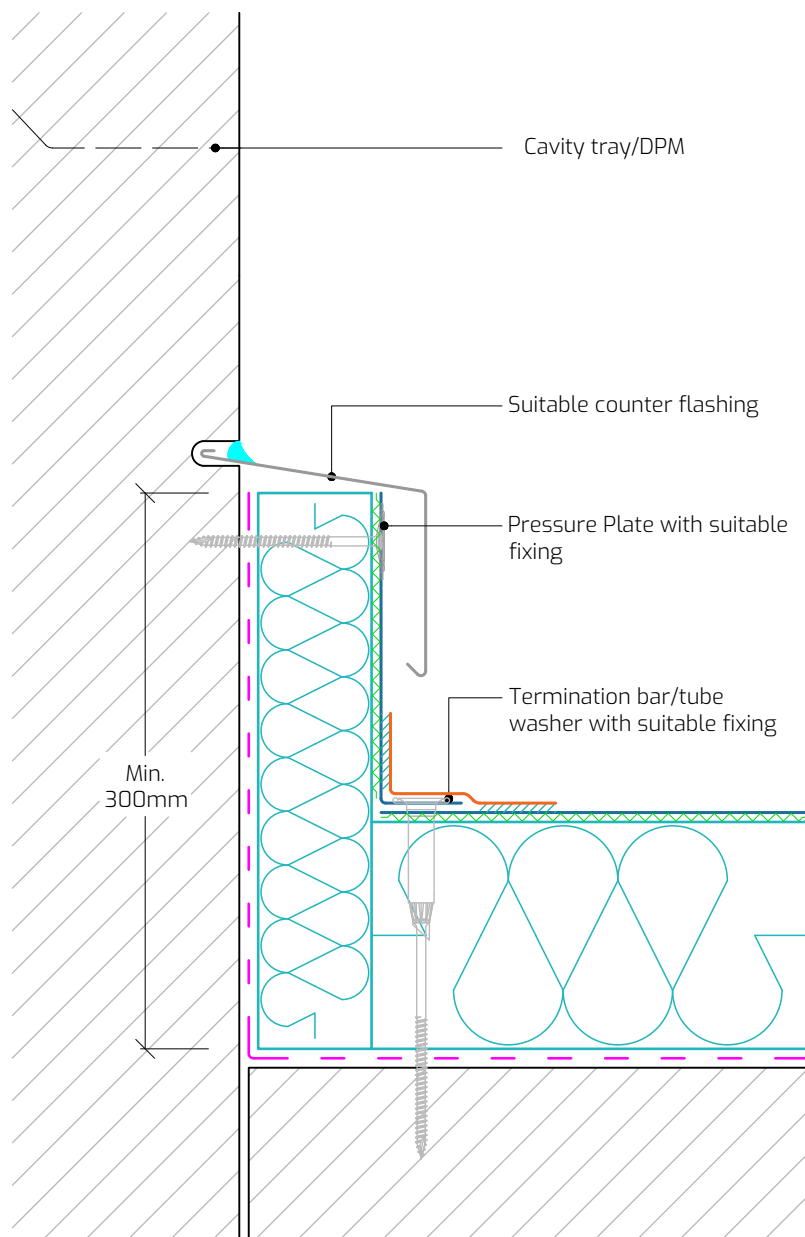
StrataPlan GF Warm Roof System

Drawing Number: SP-GF-W09**Scale:** 1:4**Drawn By:** E.V.**Date:** 26/09/2025

T: 028 9030 2924 | E: technical@stratawaterproofing.com | W: www.stratawaterproofing.com

Copyright Reserved - Please note that this drawing and the copyright therein is the property of Strata Waterproofing Systems and is issued on the understanding that the drawing or any detail thereof will not be divulged to a third party unless written permission is first obtained from Strata Waterproofing Systems. The drawing is valid only when approved by the Architect / Contractor concerned.

This detail is representative of a typical situation and provided for illustration purposes. Insulation thickness shown may differ in accordance with the specified U-value requirement.

**Alternative Detail**