

StrataPlan Coated Metal Sheet

Specialist PVC coated metal sheet

Product overview

StrataPlan Coated Metal Sheet comprises a galvanised steel sheet protected on the surface with a StrataPlan membrane layer. This sheet serves as the primary material for creating preformed profiles like trims, drips, angles, and more.

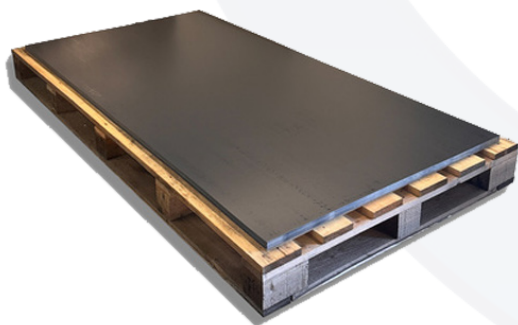
Application guidelines

Before commencing work ensure that the application area is clean and free from any contaminants. Measure the area that the preformed StrataPlan Coated Metal is being applied to and cut to size.

Align correctly then using self fixing fasteners fix the preformed the metal to the substrate. The StrataPlan membrane can then be hot air welded onto the metal.

Technical characteristics

Properties	Declared Performance
Attachment	Fastened to substrate using StrataFix
Colour	Anthracite
Thickness	1.2mm
Length	2,000mm
Width	1,000mm



Compatibility

This product should only be used with the StrataPlan range of PVC single ply membranes.

Environmental considerations

StrataPlan Coated Metal Sheets can be disposed of in accordance with local regulations. The clean waste material can be recycled. Any contaminated waste must be disposed of in accordance with local regulations.

Health and safety

The product does not contain any substance which is likely to be detrimental to your health or to the environment and complies with generally admitted Health and Safety Requirements.

Health and Safety should be observed at all times in accordance with HSE and industry guidance. Specific Risk Assessments and Method Statements should be produced by contractors where necessary to ensure Working at Heights, Fire Safety and Manual Handling rules are compliant with current law and regulations. A material safety datasheet is available for this product upon request.

Further information

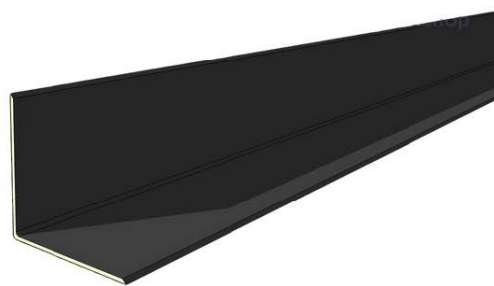
The information contained in this datasheet, along with any advice provided (either written or verbal) through testing are based on our experience and do not constitute any product guarantee for the installer.

We recommend that all of the information provided is carefully studied before proceeding with application, and strongly advise that suitable tests are carried out on site before application in order to determine the suitability and compatibility for the specific project.

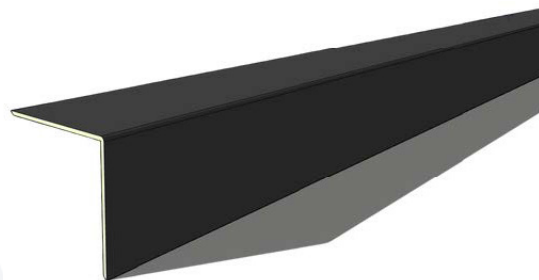
The application, use and processing of our products are beyond our control, and therefore under the exclusive responsibility of the installer. As a result, the installer will be solely responsible for any damage derived from the partial or complete disregard of our guidance or the general mis-use of any of our materials.

StrataPlan Preformed Coated Metal Sheets - Standard Sizes

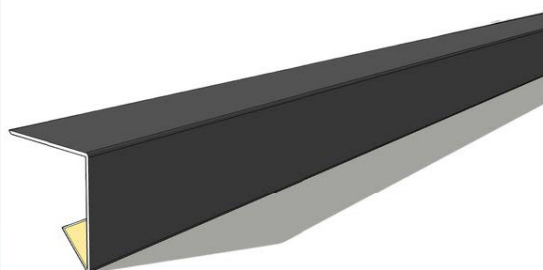
Internal angle
50mm x 50mm
Internal angle 100°



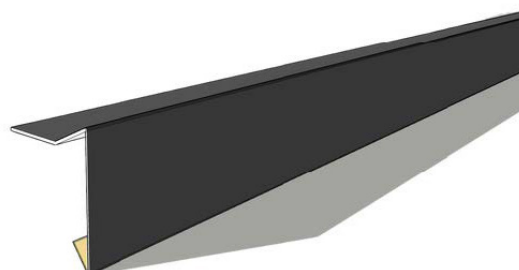
External angle
50mm x 50mm
Internal angle 80°



Fascia Drip Trim comes in
50mm x 50mm x 15mm
or
75mm x 75mm x 15mm
or
100mm x 100mm x 15mm°



Weather Check Fascia Drip Trim
48.8mm x 35mm
x 100mm x 15mm



Note: Specific sizes and profiles are available upon request.

Strata Waterproofing Head Office

Unit 3, Kilwee Business Park,
Dunmurry, Belfast, BT17 0HD
(T): 028 9030 2924

UK Depot

Unit A1, Ropemaker Park,
Hailsham, East Sussex, BN27 3GU
(T): 01323 920208

General Enquiries

(T): 028 9030 2924
(E): info@stratawaterproofing.com
www.stratawaterproofing.com

