



WestWood
Qualität + Erfahrung

A wide-angle photograph of a flat roof under a cloudy sky. A prominent red waterproofing strip runs diagonally across the grey roof surface. In the background, there is a dark, rectangular mechanical unit with various pipes and conduits connected to it. The foreground shows the smooth texture of the roof membrane.

Waterproofing Systems for Flat Roofs

PMMA Based Waterproofing Systems



WestWood Liquid Technologies Ltd.

About us

WestWood Kunststofftechnik GmbH have been manufacturing high performance Polymethyl methacrylate (PMMA) liquid applied waterproofing systems in Petershagen, Germany since 1999. With subsidiaries in Switzerland, Austria, UK, USA, Benelux and Italy WestWood has become known internationally as a pioneer and supplier of modern PMMA-based waterproofing technology.

WestWood manufactures several thousand tonnes of PMMA resins at production facilities covering an area of over 4000m². Raw materials, production processes and finished products are constantly subject to comprehensive quality controls. An in-house Research and Development team are constantly working to optimise existing product performance whilst developing new and innovative waterproofing solutions.

Our roof waterproofing membranes provide long lasting, weatherproof protection and the success of PMMA as a waterproofing technology can be attributed to:

System Features:

Speed Highly reactive PMMA resins are fully cured in approximately 30 minutes, allowing areas to be completed quickly, minimising time on site

Can be Applied at Very Low Temperatures This technology offers one of the quickest cure times of any liquid on the market, even in lower temperatures

Cold Applied Eliminating the risk of fire on an occupied building during installation

Seamless Eliminating the possibility of joint failure due to poor workmanship

Highly flexible The fully reinforced waterproofing system is elastic and free from plasticisers which means that they can tolerate thermal movement within the substrate without splitting

Compatible with almost all substrates such as felt, single ply, asphalt and concrete

Easy Application by roller, no specialist equipment is required

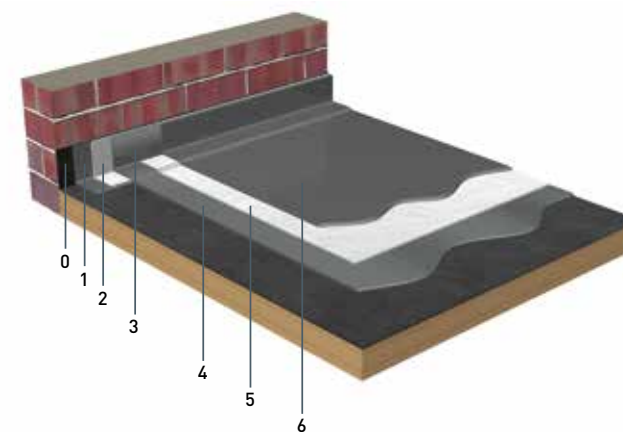
Service Life of 25 Years which is BBA certified





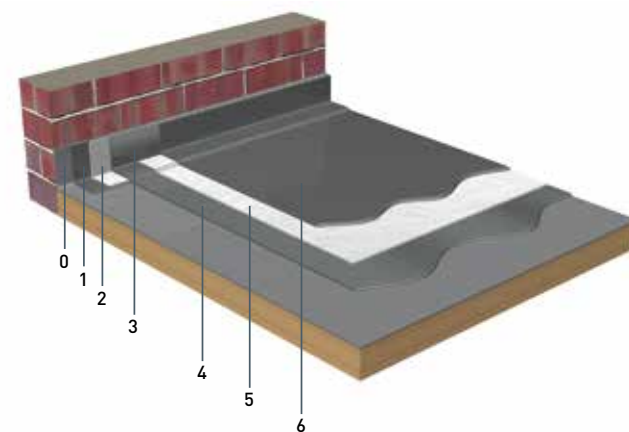
Waterproofing System on Existing Felt Substrates

- 6 WestWood 230 (applied wet on wet)
- 5 WestWood Fleece on the flat areas
- 4 Wecryl 230
- 3 Wecryl 230 Thix (applied wet on wet)
- 2 WestWood Fleece on the detail areas
- 1 Wecryl 230 Thix
- 0 Felt Substrate



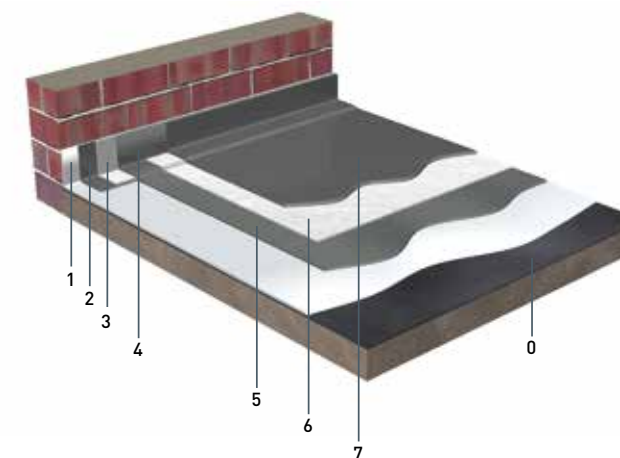
Waterproofing System on Existing PVC Single Ply Substrates

- 6 WestWood 230 (applied wet on wet)
- 5 WestWood Fleece on the flat areas
- 4 Wecryl 230
- 3 Wecryl 230 Thix (applied wet on wet)
- 2 WestWood Fleece on the detail areas
- 1 Wecryl 230 Thix
- 0 Single Ply



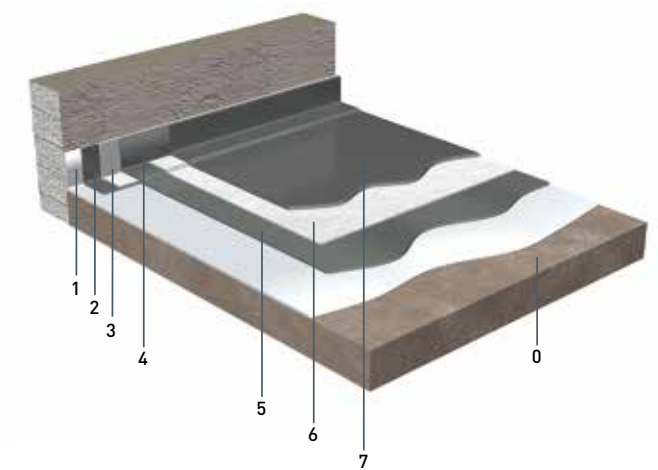
Waterproofing System on Existing Asphalt Substrates

- 7 WestWood 230 (applied wet on wet)
- 6 WestWood Fleece on the flat areas
- 5 Wecryl 230
- 4 Wecryl 230 Thix (applied wet on wet)
- 3 WestWood Fleece on the detail areas
- 2 Wecryl 230 Thix
- 1 Wecryl 222 Primer
- 0 Asphalt Substrate



Waterproofing System for Inverted Roof on New Concrete Substrates

- 7 WestWood 230 (applied wet on wet)
- 6 WestWood Fleece on the flat areas
- 5 Wecryl 230
- 4 Wecryl 230 Thix (applied wet on wet)
- 3 WestWood Fleece on the detail areas
- 2 Wecryl 230 Thix
- 1 Wecryl 276 Primer
- 0 Concrete Substrate



Service

WestWood Liquid Technologies Ltd.

WestWood Service

With WestWood UK you have a professional and loyal partner to support you in your project needs. Our aim is to provide you with superior, long lasting and reliable solutions that we develop with enthusiasm and deliver confidently in conjunction with our contractors and suppliers.

Consultation Service

Our advisors possess extensive roofing expertise which allows us to offer an unrivalled service experience that includes technical advice, guidance, and support. Together we will develop the best solutions for your roof and support you actively during the implementation phase of your project.

Technical Documentation

Please go to www.WestWood-uk.com to discover many drawings of standard details as well as current product data sheets, system descriptions and helpful information about the application of liquid resins.

Approved Contractors & Training

A fully functional and durable waterproofing system is only achievable if it is installed correctly. We therefore attach great importance to training our approved contractors. From our training centre in Poole, Dorset we are able to provide Operatives, Estimators, Sales and Contracts Managers with bespoke training modules on all our systems.

We also offer the Basic Competency Programme which has been approved by the LRWA (Liquid Roofing & Waterproofing Association) and allows the trainee access to a temporary red, three year Experienced Worker CSCS card and is seen as a gateway to achieving the level 2 Liquid Roofing NVQ.

For more details on training please visit www.WestWood-uk.com





PMMA Delivers

Variety of Applications

Liquid PMMA-based resins have been used as Waterproofing or Surfacing Systems for over 30 years. Depending on the technical, aesthetic and functional requirements, our systems are used in the follows areas of application:



Roofs

Flat Roofs
Dome Roofs
Profiled Metal Roofs
Detailing



Balconies

Terraces
Balconies
Communal Walkways
Stairways



Car Parks

Multi-Storey
Underground
Ramps
Entrances and Exits



Flooring

Food Production
Shopping Centres
Exhibition Facilities
Plant Rooms



Traffic

Roads
Airports
Bridges
Podiums



Spa

Open-Air Pools
Indoor Pools
Turkish Baths
Showers



Industry

Warehouses
Frozen Storage
Workshops
Laboratories



Special

Underground
Pond Systems
Fountains
Kitchens

WestWood Liquid Technologies Ltd are members of:

Accreditations:



"Having worked very successfully with the WestWood team and their products, I recommend them with confidence. WestWood are proactive and reliable, with liquid applied waterproofing and surfacing systems to match their high service standards." Paul Belfield, Director, Rund Partnership Limited

WestWood Liquid Technologies Limited
31 Morris Road, Nuffield Industrial Estate,
Poole, Dorset, BH17 0GG · United Kingdom
www.westwood-uk.com
Tel: +44 800 808 5480

