



WestWood Roof Waterproofing System

Single Source Supply


Technical Support Our advisers possess extensive waterproofing expertise and know about the application possibilities for our products. Contact our Technical Support – we look forward to working with you and to find the right waterproofing solution for your project.



Supplementary Products WestWood supplementary products round off our range and are designed to be used in conjunction with other WestWood products. Our price list also shows the complete range of accessories and tools for applying a liquid-resin Waterproofing System.

Product	Brief description	Application	Consumption	Notes
Wecryl 288 Finish	UV-stable, pigmented Sealer / Finish	Finish for topped and smooth surfaces, with and without chips.	0,6 - 0,8 kg/m ²	Choice of colours based on RAL chart.
Wecryl 242	Mortar	Repair mortar for mineral and bituminous substrates. Concrete repairs.	approx. 2 kg/m ² /mm	Standard black and grey Particle size 3 mm.
Wecryl Surfacr	Fine surfacer (filler)	Pore and cavity filler, joint filler, adhesive for tiles etc.	approx. 1,8 kg/m ² /mm	Do not coat directly with Wecryl 288.
Weseal	Surfacer, fibre-reinforced	For waterproofing minor details, screw heads, etc.	approx. 1,8 kg/m ² /mm	
Tools	Applicators, mixing tubs, rollers, brushes, decoupling tape			
WestWood Fleece	Polyester Fleece	Fleece 110 g/m ² in all appropriate sizes.		50 m rolls. Also available as a perforated fleece.

Substrate Preparation Proper substrate pre-treatment and the correct choice of primer form the basis for the quality and serviceability of a composite Waterproofing System.

Substrate preparations for Wethan and Wecryl Roof Waterproofing Systems	Wecryl R 230 Wecryl R 230 thix	Wethan 275	Wethan 280 Flashing	Comments
Polymer-bitumen sheets (SBS)	None	None	None	This is only an extract from our substrate preparation table. The complete overview can be found on our home page or go direct and fast to the document using this QR code: 
Slate-covered polymer-bitumen sheets (SBS)	None	None	None	
Bitumen sheets (APP)	Wecryl 298	Wethan 141	Wethan 141	
Painted surfaces	None	None	None	
Metals (steel, aluminium, copper, zinc)	None	None	None	
Concrete, screed	Wecryl 298	Wethan 141	Wethan 141	
Brickwork	Wecryl 298	Wethan 141	Wethan 141	
Roofing membranes (EPDM + PVC membrane)	On request	On request	On request	
PVC	None	None	None	
Wood	Wecryl 298	Wethan 141	Wethan 141	
Polyester	None	None	None	

WestWood Liquid Technologies Limited
 31 Morris Road, Nuffield Industrial Estate,
 Poole, Dorset, BH17 0GG · United Kingdom
www.westwood-uk.com
 Tel: +44 800 808 5480



WestWood®
Qualität + Erfahrung

Roof Waterproofing Systems



WestWood Liquid Resins

Roof Waterproofing Systems

WestWood Roof Waterproofing Systems are resin-based, liquid-applied waterproofing membranes. 30 years of development expertise, with numerous innovations, pave the way for extraordinary materials technology. To demonstrate our capabilities all WestWood Roof Waterproofing Systems have been tested according to ETAG 005.

Waterproofing of Details Seamless and jointless Waterproofing Systems that comply with the relevant standards can be created using liquid WestWood resins. Complex details are reliably incorporated in the waterproofing layer in just a few steps.

Short cure times Wecryl R 230 thix is rainproof and protected against adverse weather conditions after 30 minutes. The polyurethane-based waterproofing products Wethan 275 and Wethan 280 Flashing are rainproof after approx. 4 hours.

PUR Roof Waterproofing Systems

Wethan Roof Waterproofing System			
	Primer	Waterproofing for main area	Waterproofing for details
Description	Wethan 141 PUR primer for mineral substrates	Wethan 275 PUR waterproofing for main area	Wethan 280 Flashing PUR waterproofing for details, thixotropic, fibre-reinforced
Components	1	1	1
Consumption	ca. 200 g/m ²	ca. 1.4 - 2.4 kg/m ²	ca. 1.5 - 3.5 kg/m ²
Elongation at break		800 %	250 %
Rainproofness	-	ca. 4 hours	ca. 3 - 4 hours
Cure time	7 days	7 days	7 days
Test certificate acc. to ETAG 0005	European Technical Approval Service life Climate zones Imposed loads Roof slope Minimum surface temperature Maximum surface temperature	ETA-13/0768 W3 (25 years) M and S P1 to P4 S1 to S4 TL4 (-30°C) TH4 (+90°C)	ETA-13/0771 W3 (25 years) M and S P1 to P4 S1 to S4 TL4 (-30°C) TH4 (+90°C)

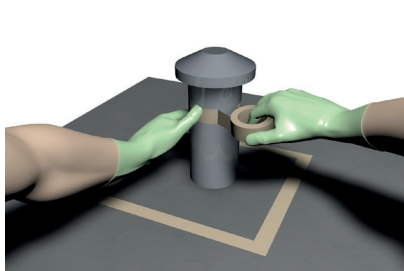


Scan QR code to download test certificate or contact info@westwood-uk.com

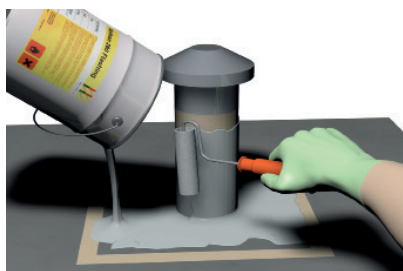


Scan QR code to download test certificate or contact info@westwood-uk.com

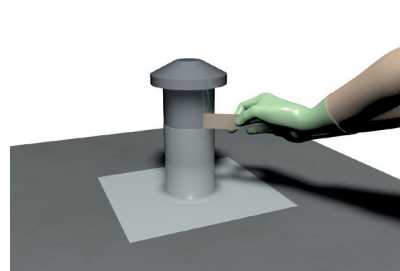
Wethan 280 Flashing, fleeceless waterproofing for details, shown here on an outlet vent



1. Substrate preparation and application of masking tape to edge of area to be waterproofed.



2. Resin application without embedded fleece. Optional second layer.



3. The waterproofing is rainproof after approx. 3 - 4 hours.

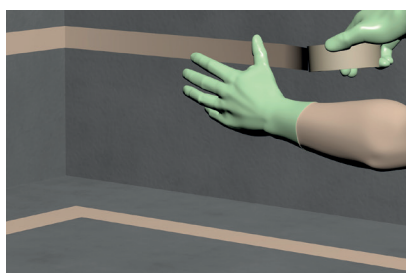
PMMA Roof Waterproofing Systems

Wecryl Roof Waterproofing Systems			
	Primer	Waterproofing for main area	Waterproofing for details
Description	Wecryl 298 Combination primer for absorbent and non-absorbent substrates	Wecryl R 230 PMMA waterproofing for main area	Wecryl R 230 thix PMMA waterproofing for details
Components	2K	2K	2K
Consumption	ca. 400 - 600 g/m ²	ca. 2.5 - 3.0 kg/m ²	ca. 2.5 - 3.0 kg/m ²
Pot life	ca. 10 minutes	ca. 15 minutes	ca. 15 minutes
Rainproofness	ca. 30 minutes	ca. 30 minutes	ca. 30 minutes
Cure time	ca. 3 hours	ca. 3 hours	ca. 3 hours
Test certificate acc. to ETAG 0005	European Technical Approval Service life Climate zones Imposed loads Roof slope Minimum surface temperature Maximum surface temperature Root resistance tested according to FLL and EN 13948	ETA-06/0087 W3 (25 years) M and S P1 to P3 S1 to S4 TL3 (-20°C) TH3 (+80°C)	ETA-06/0087 W3 (25 years) M and S P1 to P3 S1 to S4 TL3 (-20°C) TH3 (+80°C)

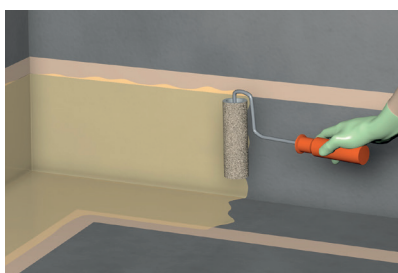


Scan QR code to download test certificate or contact info@westwood-uk.com

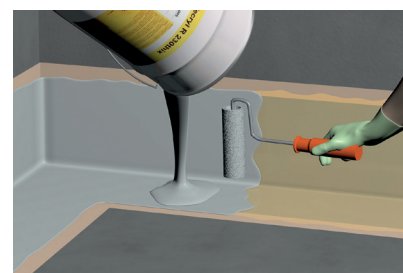
Wecryl R 230 thix, fleece-reinforced detail waterproofing, shown here on an internal corner



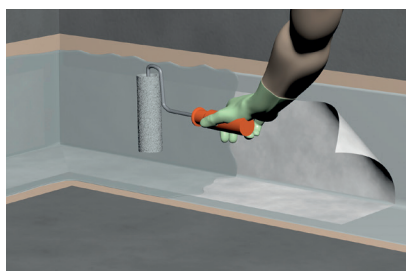
1. Substrate preparation and application of masking tape to edge of area to be waterproofed.



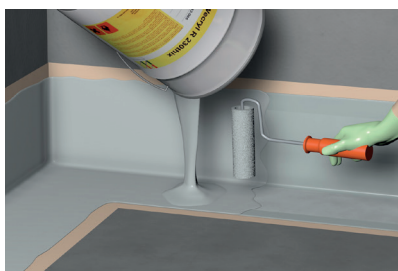
2. Apply Wecryl 298 combination primer if required (see substrate table).



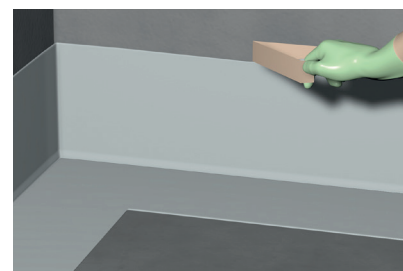
3. Application of Wecryl R 230 thix detail waterproofing



4. Cut fleece embedded.



5. Next application of Wecryl R 230 thix wet in wet.



6. After just 30 minutes the waterproofing is rainproof.