



WestWood®
Qualität + Erfahrung

Reference Report

238 City Road,
Clerkenwell,
London





238 City Road, Clerkenwell, London, EC1V 2PQ

Wecryl Waterproofing System on a Car Park Refurbishment

Contractor: Stafford Roofing

Project: 238 City Road, Clerkenwell, London, EC1V 2PQ

Substrate: Asphalt, Macadam, concrete, brickwork, metal

Size: 400m²



Weseal 810 Putty was used for uneven surfaces



Weseal 815 Fibre Putty was used for awkward and fiddly detailing

Background: Water had been leaking into the building's basement below the parking area. Various air handling units and detailing next to the building provided a challenge to waterproof.

WestWood Liquid Technologies
31 Morris Road
Nuffield Industrial Estate
Poole, Dorset, BH17 0GG
Tel +44 800 808 5480
www.WestWood-uk.com





238 City Road, Clerkenwell, London, EC1V 2PQ

Wecryl Waterproofing System on a Car Park Refurbishment



The entire area was waterproofed first of all



Wecryl 233 wearing layer with a quartz sand broadcast was added to the hardstanding area.

The Solution: A Wecryl fully reinforced system with wearing layers and a skid-inhibiting finish was installed.

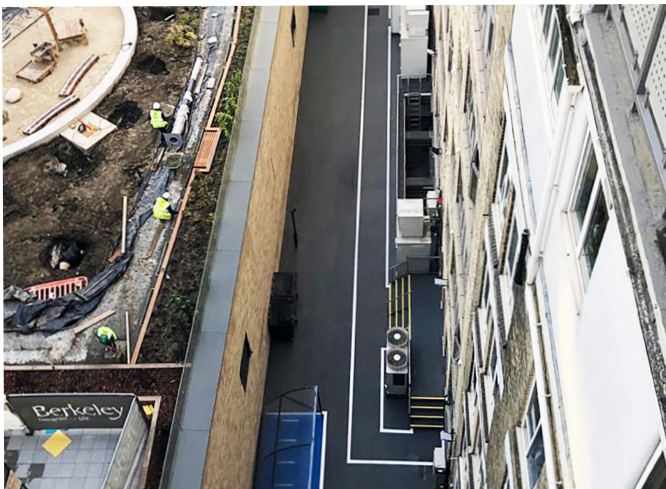
Wecryl products are self-terminating and ideal for waterproofing around awkward details. Weseal 815 Fibre Reinforced Putty was used in conjunction with Wecryl 230 waterproofing to ensure a watertight finish even in difficult to reach areas.

To protect the waterproofing to the main field area and to provide a skid inhibiting trafficable finish, quartz sand was broadcast into a Wecryl 233 wearing layer. This provided a robust layer designed to take vehicular traffic whilst remaining flexible. Wecryl 288 sealer coat provided the finishing colour, line marking and demarcation.



238 City Road, Clerkenwell, London, EC1V 2PQ

Wecryl Waterproofing System on a Car Park Refurbishment



Completed

The Benefits: The combination of flexible self-terminating waterproofing along with the ability to incorporate purpose made wearing layers made Wecryl products the ideal choice for this project.

Each layer of the system is rapid curing and retains these properties even in colder temperatures. The products are showerproof in 15 minutes. During the project the weather did have an effect on the schedule. However, the fast curing PMMA products used allowed the application to be flexible and the car park watertight at all times.

WestWood Liquid Technologies
31 Morris Road
Nuffield Industrial Estate
Poole, Dorset, BH17 0GG
Tel +44 800 808 5480
www.WestWood-uk.com

 **WestWood**
Qualität + Erfahrung