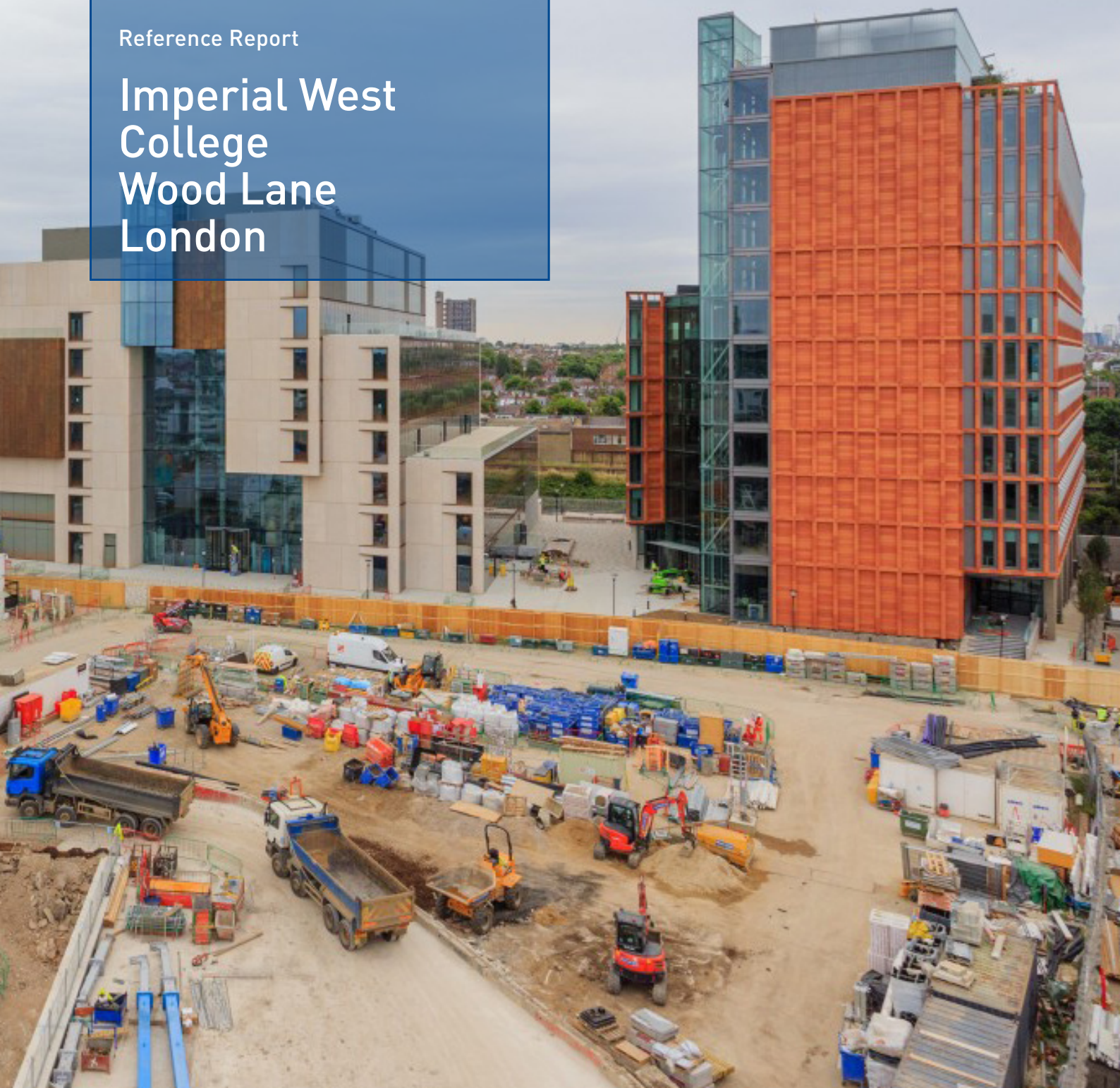




WestWood®
Qualität + Erfahrung

Reference Report

Imperial West College Wood Lane London





Imperial West College, Wood Lane, London, W12 0BZ

Wecryl High Build System with Wecryl 410 Textured Coating

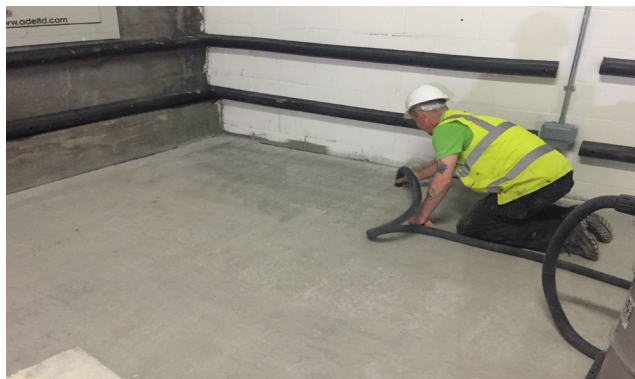
Contractor: Roofline Group
Project: Imperial West College,
Wood Lane, London,
W12 0BZ
Substrate: Concrete
Size: 360m²
Material: Wecryl 276, Wecryl 122,
Wecryl 233, Wecryl 288,
Wecryl 242,
Weproof 264 + Fleece,
Wecryl 410
Completion: September 2016



Background

Main contractor Lang O'Rourke needed a robust waterproof system suitable for a loading bay that was to be used frequently. The system also needed to be a thin solution as a lack of threshold height was a concern.

Before



The Solution

WestWood's High Build system was used to produce a hard wearing layer. It is also flexible to allow for any movement within the substrate. The system was completed using Wecryl 410 Textured Coating to provide a robust, resilient and long lasting non-slip finish which is designed for areas of heavy vehicular traffic.

WestWood Liquid Technologies Limited
Unit 12, Albany Park, Cabot Lane
Poole, Dorset, BH17 7BX · United Kingdom
www.westwood-uk.com
Tel: +44 800 808 5480

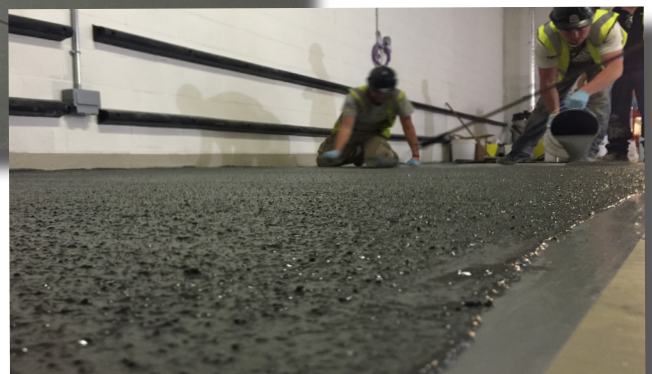




Imperial West College, Wood Lane, London, W12 0BZ

Wecryl High Build System with Wecryl 410 Textured Coating

During



WestWood Liquid Technologies Limited
Unit 12 Albany Park, Cabot Lane
Poole, Dorset BH17 7BX · United Kingdom
www.westwood-uk.com
Tel: +44 800 808 5480



Imperial West College, Wood Lane, London, W12 0BZ

Wecryl High Build System with Wecryl 410 Textured Coating

The Benefits

The Wecryl High Build System was quickly and easily applied to the prepared concrete substrate. Wecryl 242 Mortar was used to make good the pits and hollows that were evident.

This could then be over-coated within the hour. The rapid curing nature of Wecryl products meant that disruption was kept to a minimum.

Wecryl 410 Textured Coating was installed to provide a robust, resilient and long lasting non-slip finish which is designed for areas of heavy vehicular traffic.

Applied in sections, the overall finish homogenised to create a seamless hard wearing but flexible membrane across the entire loading bay area.

After



WestWood Liquid Technologies Limited
Unit 12 Albany Park, Cabot Lane
Poole, Dorset BH17 7BX · United Kingdom
www.westwood-uk.com
Tel: +44 800 808 5480

