



WestWood®
Qualität + Erfahrung

Reference Report

Balcony & Walkway Refurbishment Hillington Square

Contractor: Proctor Roofing Ltd
Project: Hillington Square
Substrate: Asphalt & Timber
Size: 350m2
Material: Wecryl 276 Primer, Wecryl 222 Primer, Wecryl 298 Primer, Wmp 713 Metal Primer, Wecryl 230/230thix Waterproofing Layer, Wecryl 233 Wearing Layer, Wecryl 242 Mortar, Weseal 815 Reinforced Putty, Wecryl 288 Sealer Coat
Specification: Wecryl Waterproofing System & Wecryl High Build System
Completion: 19th November 2015





Balcony and Walkway Refurbishment, Valentine and Thompson House, Hillington Square

Wecryl Waterproofing System

WestWood Liquid Technologies Wecryl Waterproofing System & Wecryl High Build System were successfully installed onto 350m² of balconies and walkways to a residential complex in King's Lynn, Norfolk. WestWood Approved Contractor Proctor Roofing Ltd, cleaned and prepared the existing substrate. Then directly applied Wecryl 276 to the brickwork and Wecryl 222 Primer to the asphalt.

To the timber balconies a fully reinforced Wecryl 230 Waterproofing Layer was added, whilst to the asphalt, Wecryl 230 thix was used on all upstands and areas of detailing. Once the Wecryl 233 Hard Wearing Layer and Quartz Sand had been installed, the project was nicely coated with a light grey Wecryl 288 finish. Both systems provided a thin, hard wearing, non-slip waterproof coating.



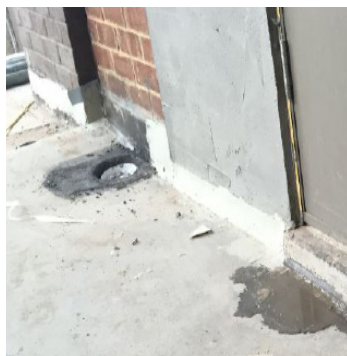
Original asphalt walkway



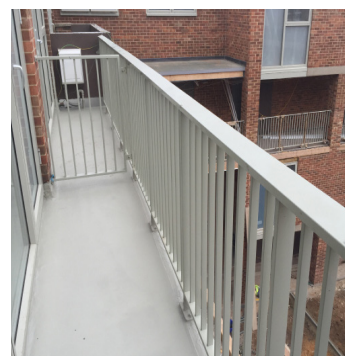
Existing asphalt balconies



Walkway cracks and gaps sealed using Weseal 815 Rapid Curing Mortar



Wecryl 242 Mortar used to fill around new drains



Completed balconies



Walkway successfully coated & waterproofed with rapid curing Wecryl High Build System

WestWood Liquid Technologies Limited
Unit 12, Albany Park, Cabot Lane
Poole, Dorset BH17 7BX · United Kingdom
www.westwood-uk.com
Tel: +44 800 808 5480

 **WestWood®**
Qualität + Erfahrung