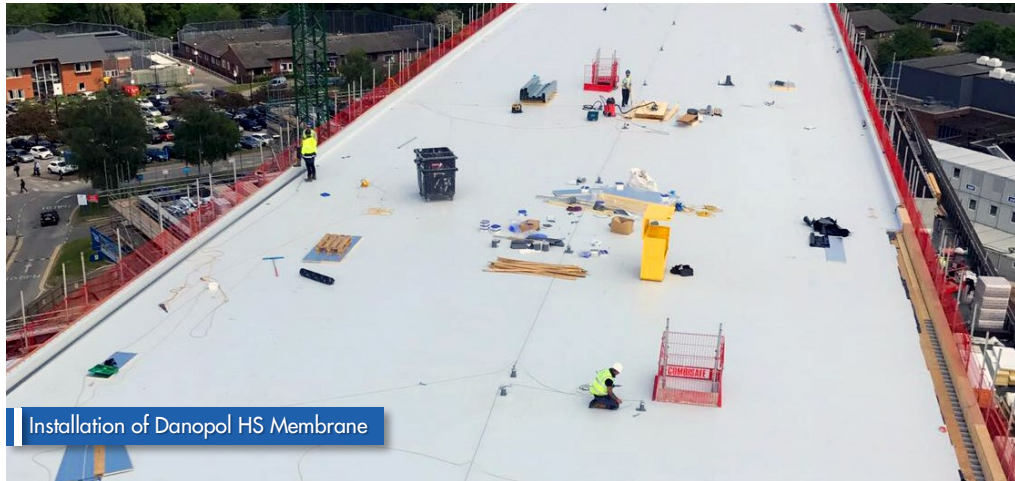


Overhead View of Chase Farm Hospital



Installation of Danopol HS Membrane



Flat Roof Finish

Some of our most important public sector assets are held within the healthcare system so choosing the correct specification is critical. Often these buildings host patients or the latest medical equipment, and this centrally funded NHS project at Chase Farm Hospital was no different.

This particular project hosted an array of plant and equipment for the NHS and our lightweight Danopol HS 1.5mm mechanically fastened membrane was chosen as the waterproofing system to be installed onto the structural metal deck.

The scheme also featured a tapered insulation scheme in partnership with Kingspan Insulation designed to 1:60 falls and 0.30 w/m²K u-value.

When installed to structural metal decks, all the mechanically fastened components are mechanically fastened to the crowns only, so careful consideration must be made to ensure that any mechanical fasteners coincide appropriately.

A project-specific wind uplift calculation was completed by our technical team which provided detailed instructions and fastening patterns for the mechanical attachment of both the waterproofing membrane and tapered insulation scheme.

In addition to ensuring that the system will resist any applicable windload, our calculations can reduce overall frequency of fasteners, ensuring that the project is not over-engineered and ensure that the installation progresses as quickly as possible.

KEY FACTS

Construction Type: New Build
Warm Roof
Sector: Public Sector
Approx. Size: 2,200m²
Warranty Period: 20 Years

WATERPROOFING SYSTEM

Danopol HS 1.5mm - Light Grey